
Our new work station that performs an electroluminescence test of the module expresses Ecoprogetti's philosophy in promoting the research of new solutions and technologies to improve the quality of the product. This machine permits the user to perform a deep extensive control of the production, permitting continuously to improve the process based on the raw material in use. Ecolab 10-EL is developed as a quality control instrument that offers to the user the maximum possible resolution that allows a deep quality research. Moreover, with the assistance of adapters it's possible to test single cells or strings not yet laminated in order to make even more usable this new technology.

CHARACTERISTICS

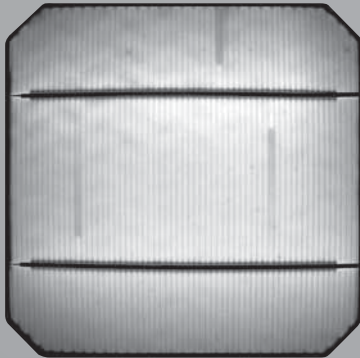
1. High resolution: max 8Mpx per snap;
2. High accuracy: $1\text{px} = 0,068\text{mm}$;
3. Exposition time: from 100ms to 30s per snap;
4. Automatic handling movement of the camera;
5. Analyzing time for a complete module: 120s;
6. Real time view during the movements;
7. Inline work height 1000 mm;
8. Possibility to customize the lens to use the device with special cells;
9. Possibility to test a complete module and also single cells before lamination;
10. PC based software.

FUNCTION REQUIREMENTS

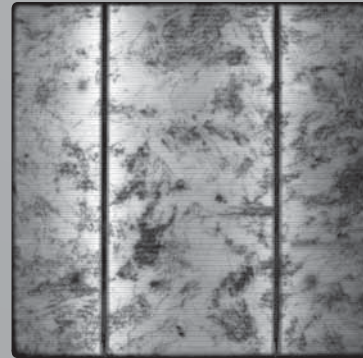
Electrical	380V 3phases + neutral + ground
Peak power	2,5 kW
Frequency	50 Hz

DIMENSIONS

Height	930 mm
Width	1950 mm
Length	2800 mm
Weight	300 kg



Monocrystalline cell



Polycrystalline cell

ECOLAB 10-EL

