

P.ENERGY MC02A

P.ENERGY MC02A is an offline sun simulator that measures the IV characteristics of PV modules whether they are made of thin film or crystalline material. It is effective and reliable both in production and quality control applications like labs or research centres.

- Class A solar simulator according to IEC 904-9
 - Xenon flash tube with AM 1,5G filter
 - ± 2 % irradiance uniformity with proprietary optics
 - irradiance and temperature corrections according to IEC 891
- Proprietary electronic load and data sampling system based on Endecas Oy software
 - Measurement reliability surpasses IEC 904-1
 - High voltage and high current ranges
 - Irradiance level adjustable 200-1200 W/m²
 - Windows compatible data handling and saving options
- Superior testing productivity
 - Testing capacity up to 60 modules per hour
 - Low cost of ownership: commercial flash tubes is the only necessary spare part
 - Automatic module identification by barcode scanning
 - Flexible integration to factory instrumentation with I/O, PLC and DDE link interface option

Characteristics	
Test Area	1600 x 2200 mm
Measurements per hour	60
Distance lamp / module	5000 mm

The information in this facsimile is proprietary, privileged and confidential. It is intended only for the use of the individual entity whom it is sent.

Overall Dimensions	
Length	6000 mm
Width	3000 mm
Height	2950 mm

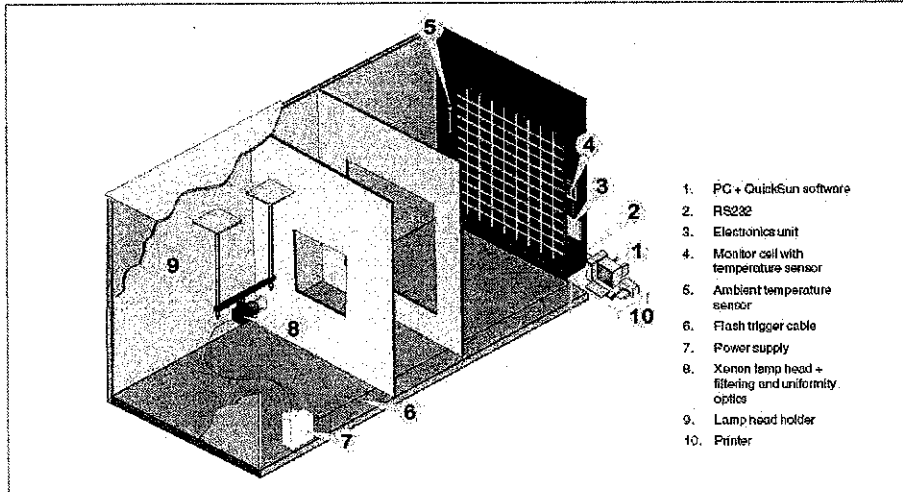
1. Characteristics

Reference cell:

- Crystalline silicon cell calibrated against CEC JRC Ispra certified ESTI sensor.
- Temperature measured and signal corrected accordingly. Accuracy $\pm 1^\circ\text{C}$ within $10\text{--}40^\circ\text{C}$

Ambient Temperature:

- IC sensor (LM35). Accuracy $\pm 1^\circ\text{C}$ within $10\text{--}40^\circ\text{C}$



The information in this facsimile is proprietary, privileged and confidential. It is intended only for the use of the individual entity whom it is sent.

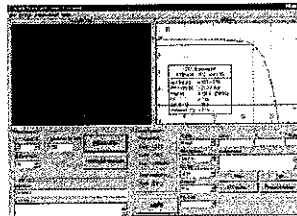


Discover the Path to Energy

P.Energy S.p.A.
Via Caduti sul Lavoro, 15 – IT35014
Fontaniva (Padova)
Tel: +39 049 7966190 – Fax: +39 049 7968776
info@penergy.it www.penergy.it

Electronic Unit:

- Load: HEXFET, sweep rate controlled by software
- Current: Maximum current range options 10,20,30,40 A (Factory setting according to customer's requirements).
Actual scales user adjustable from 0,5 to 10A or from 1 to 20 A or from 2 to 40 A with an absolute measurement accuracy better than 0,5% as calculated from the selected scale
- Voltage: Maximum Voltage range options 50,100,200,300 V (Factory setting according to customer's requirements) . Actual scales user adjustable from 1 to 50 V or from 1 to 100 V or from 2 to 200 V or from 2 to 300 V with an absolute measurement accuracy better than 0,5% as calculated from the selected scale.



2. Inclusions

Computer System

Conformity : CE approved
Warranty : 2 year

3. Optional

- Thermal Printer
- Software for thermal printer
- Bar code scanner

The information in this facsimile is proprietary, privileged and confidential. It is intended only for the use of the individual entity whom it is sent.